

## OCHS Board of Directors

Robert Martin, President  
Raymond Simpson, Vice President  
Kevin Eldridge, Treasurer  
Sally Landes, Secretary  
Alex Babey  
Harry L. Bell  
Lee Clore  
Oren Clore  
Tracy Johnson  
Marian Klein Koehler  
Sally Landes  
Duane Murner  
Shirley Orr  
Tracey Leet

Staff: : Nancy Stearns Theiss, PhD  
Executive Director  
Pam Fields, Ad.m. Assistant,  
Dot Carraco, Genealogy Coord.  
Jan Jasper, Educator , Linda  
Foster, Receptionist

## *Ann Barrickman Smiser*

2010 J. Chilton Barnett Champion of Oldham County  
History Award Recipient



Ann Barrickman Smiser was born in Skylight, Ky. on August 1, 1918. She and her husband, Jack, owned the Chevrolet dealership in LaGrange as well as owned and operated the Melrose Inn and Restaurant that was located on Hwy. 42 at the Oldham and Jefferson County line. A longtime resident of Oldham County, Ann moved to Shelbyville in 1997 where she currently resides.

Ann was selected as the 2009's February Living Treasure sponsored by the Oldham Era and Oldham County History Center. Her involvement in the Oldham County community has included her church, business and volunteer interest. She has been a member of Shiloh Methodist Church since she was 14 years old where she has served in the capacity of sec-

## The Oldham County History Center

106 N. Second Avenue  
LaGrange, KY 40031  
502-222-0826  
Email: ochstryctr@aol.com  
Website:  
oldhamcountyhistoricalsociety.org  
Hours of operation:  
T,W,Th, Sat : 10 a.m. until 4 p.m.,  
Fri 10 am to 8 p.m.  
closed Sun & Mon

retary and/or treasurer for 50 years. Ann grew-up near Skylight and attended Liberty Elementary and High School. She met her husband, Jack, when she was a teenager and after they married, they began a car dealership in Skylight which they later moved to LaGrange.

The Melrose Inn was perhaps the well-remembered business that Ann and her late husband, Jack owned. Located near on the Jefferson County line on Hwy. 42, the Melrose was a popular stop for truck traffic, tourists and destination diners from Louisville. The Smiser's hotel and restaurant became a popular Derby tradition, as well, for many folks. Their special minted bourbon juleps and country ham were a big hit along with the rib-eye steaks, Garibaldi salad, and the infamous Derby Pie. The Derby Pie was made by Mrs. Kern and sold only to the Melrose Inn for awhile, until the Kern's expanded their business.

Ann has been a longtime supporter of the Oldham County History Center and she serves on the Board of Directors for Mahan Foundation. She is a golfer, gardener and is member of a local book club. She enjoys the "manual" labor of gardening and credits her active life style and well being to growing up with three brothers that started her playing sports at an early age.

*The Oldham County Historical  
Society presents the*

**2010 Annual Gala  
"A Drive Down Memory Lane"**

**Friday, September 24, 2010 at the  
Oldham County History Center**

- \*Reception with open bar
- \*Presentation of the J. Chilton Barnett  
"Champion of Oldham County History  
Award" to Ann Barrickman Smiser
- \*Catered sit-down dinner
- \*Music for dinner and dancing
- \*Silent Auction
- \*Live Auction with Rick Wardlow,  
Auctioneer
- \*Honorary Co-Chairs: Jon and Mary Beth  
Westbrook

For individual tickets as well as sponsorship  
information contact the history center:

Oldham County History Center  
106 N. Second Ave.  
LaGrange, KY 40031  
502-222-0826

Cost: \$125 per person, Several Sponsorship  
Levels also available

Purpose: To honor Oldham Countians for  
contributions to the preservation of the his-  
tory, artifacts, architecture and quality of life  
of our county.

To raise funds to continue the work of the  
Oldham County Historical Society and the  
existence of the Oldham County History  
Center



### History Center Receives Walmart Gift

The Oldham County History Center received a \$1,000 gift from Walmart in celebration of Walmart's grand opening for the new renovation of the Moody Lane store in LaGrange.

Walmart has been a great corporate sponsor of the history center. One of its employees, Mabel Tingle, was the 2009 Living Treasure for the Oldham County History Center and Oldham Era's oral history project.

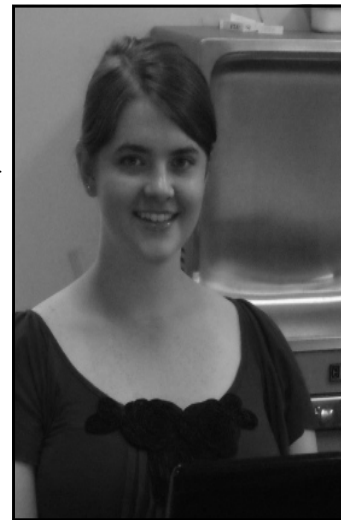
### Meet new staff member Linda Foster

Linda Foster has joined the history center team. She is helping with special events such as Girls Night Out, Arts on the Green and representing the history center at the Discover Downtown LaGrange and LaGrange Business Meetings. Linda was past owner of Christmas in Kentucky and has also been a stop on the Fall Ghost Tours where visitors meet the mysterious red cross nurse whose image is imprinted on one of Linda's antique mirrors.



### Meet Summer Intern Carolyn McBride

Carolyn is a history and international major at Macalester College in St. Paul, Minnesota. She is serving a summer internship at the Oldham County Historical Society and is helping to transcribe documents and oral histories as well as help with our archaeological institute and history camp for kids. She graduated from Oldham County High School in 2008



**Antique Iron Hosts Tractor  
Drive  
Saturday, Sept. 18, 2010**

Antique Iron of the Oldham County History Center will host a tractor drive, Saturday, Sept. 18, 2010. Participants will meet at the Oldham County Fairgrounds and then drive to Cedar Lake Lodge on Jericho Road for a cook-out and celebration of Family Day at the Lodge. It is an open event and anyone interested in participating can register. The line-up begins at 10 a.m. with the drive to Cedar Lake starting at 11 a.m. Tractors will return to the fairground around 3:30 p.m.

There is a registration fee of \$10 which included a t-shirt and lunch. Please call the history center for registration at: 502-222-0826.



In May, John Ball gave an informative talk and tickled the keys of the Oldham County History Center's player piano for the Saturday lunch series.

**Cruisin with Antique Iron and  
the Quads  
Friday, August 20, 2010, 5-9 p.m.**

Join us for a fun evening when the Antique Iron joins with the Quads for a display on the history center grounds. The Quads are enthusiasts for jazzing up antique cars and Antique Iron will bring in their old tractors and other great old machines to make an unusual exhibit for the evening! Stroll around, bring your lawn chairs and enjoy the summer evening breezes— there will be hot dogs and soft drinks for sale. The event is free and open to the public.

**Happy Trails Are Here!!  
Trail Ride, BBQ and Evening with  
John James Audubon**

Get on your cowboy boots and hat— join us in the fun evening of adventure and history. Go on a trail ride and then sit down in rustic setting at Big Horse Trails where you will meet John James Audubon. Audubon will talk about his wilderness travels across Kentucky (including Oldham County where it is rumored he painted portraits of local folk before he started his wildlife portraits.)

Evening includes delicious bbq with sides and *cash bar*.

Note: There are two prices listed: one with trail ride and one without trail ride:

\$60 per person which **includes** Trail Ride

\$35 per person **without** Trail Ride.

There will be two trail rides, one starting at 4 p.m and one starting at 5:30 p.m. Dinner at 7:00 p.m.

Audubon is portrayed by Mike Strohm. Mike has studied Audubon's life and has represented Audubon for numerous historical events, lectures and hands-on activities with children. He shares his knowledge of Audubon's natural history and techniques that Audubon used to depict wildlife in natural settings in the early frontier days of Kentucky.



Mike Strohm portrays John James Audubon. Audubon's trek across the Western frontier included time in Oldham County. Mike will set-up a camp with the authentic like setting that Audubon would have used when he painted the wilderness scenes that earned Audubon the title of America's premier wildlife artist.

Oldham County Historical Society  
106 North Second Avenue  
LaGrange, Kentucky 40031

**WE NEED YOUR HELP!**

The Oldham County Historical Society is a 501(c)3 non-profit educational organization. We need your support for to help us continue our efforts to help preserve our community's history. If you are a member, please renew today! If you are not a member, please join us in our efforts!!

Thank you for your support!



Museum visitor Ben Church creates his own recycled sculpture from the Life at the River's Edge exhibit.

Devonian Diva! One of the sculptures by Al Gorman made from river debris that will be on display as part of Life at the River's Edge exhibit.



Join today!

Annual Membership Dues:	
Seniors/Students/Individuals	\$25
Family	\$50
Donor	\$100
Friend	\$250
Patron	\$500
Director's Circle	\$1,000

Name \_\_\_\_\_

Address \_\_\_\_\_

Telephone: Home \_\_\_\_\_

Wk phone \_\_\_\_\_

Email: \_\_\_\_\_

Non-Profit Organization  
U.S. Postage  
PAID  
LaGrange, KY  
Permit No. 50

Return service requested